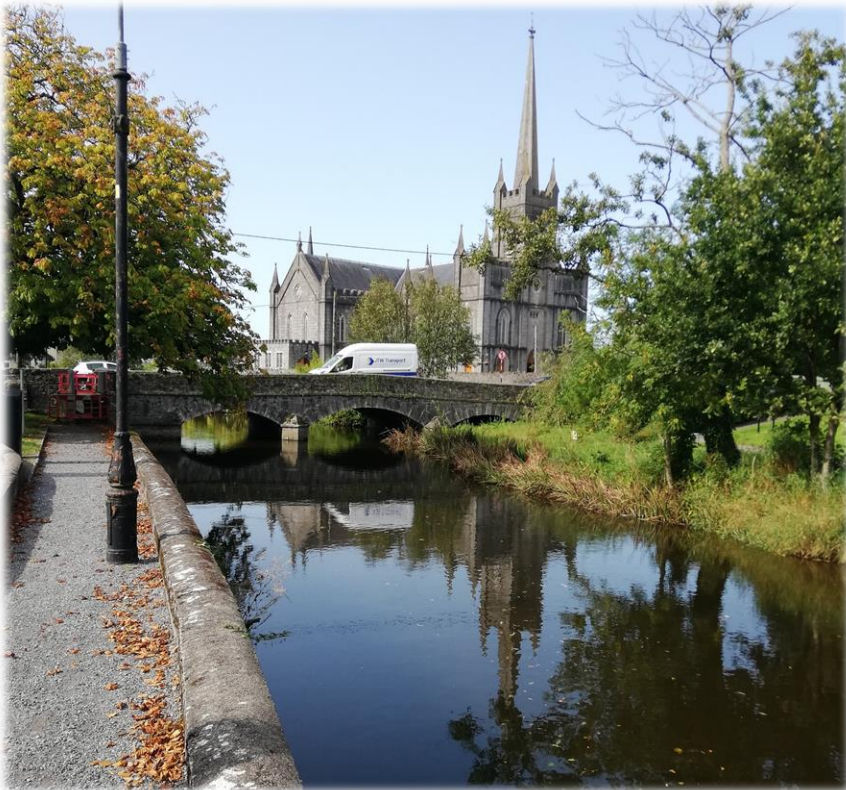


Nature-based solutions at the core of green infrastructure plans for the River Camcor, Birr, Co. Offaly

Emily Rick BSc(Env) MSc
Environmental Scientist/Geomorphologist
emily.rick@jbaconsulting.ie

27th April 2021 – CIEEM Irish Conference
Nature Based Solutions: Opportunities in a time of Biodiversity Crisis and Climate Emergency

Overview



- Driven by Birr2020 CLG
- River Camcor as the focal point of the study
- Evidence-based plan to create public amenities, improve public open spaces, and create opportunities for biodiversity
- Drawing from multiple disciplines within JBA

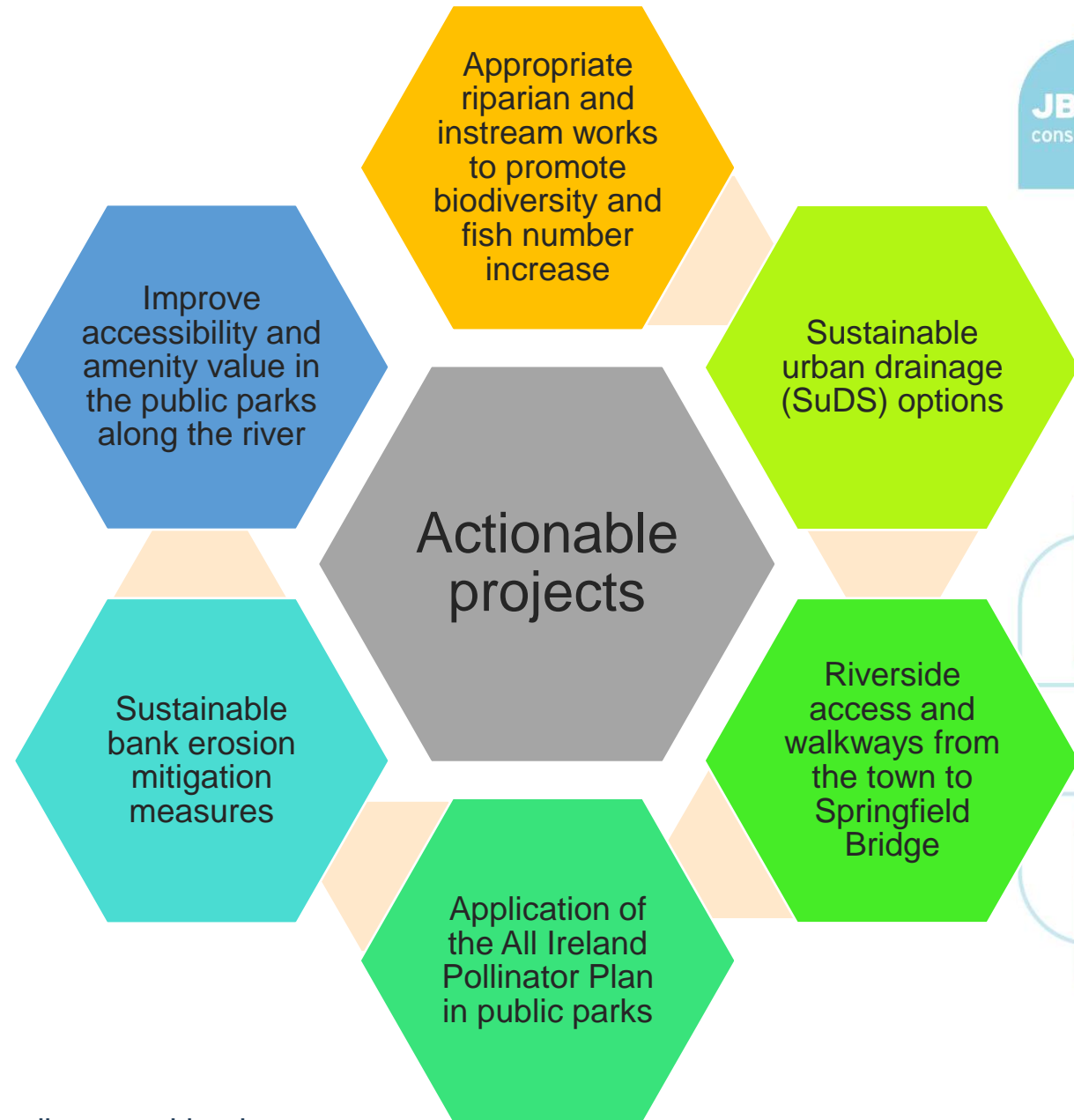


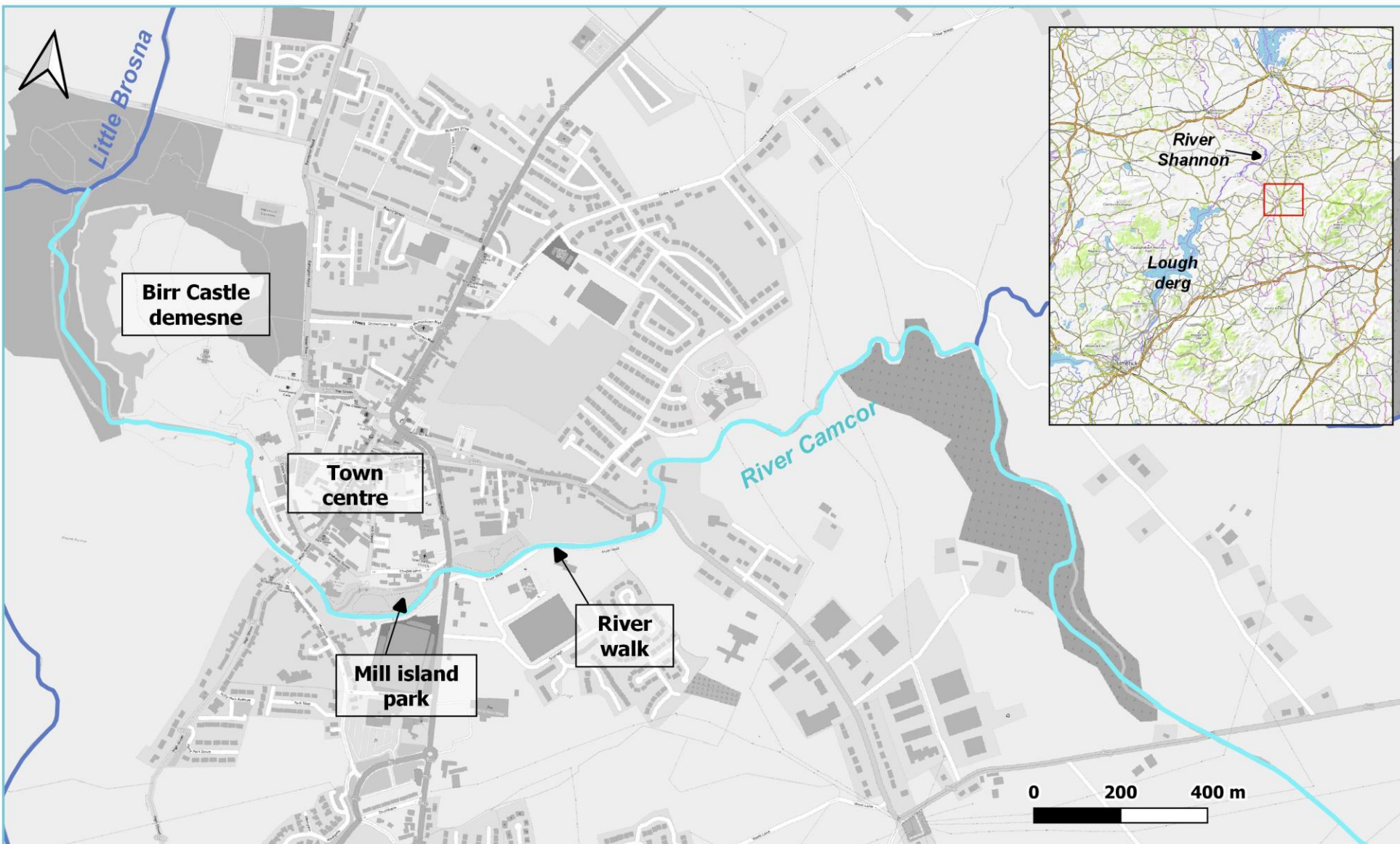
Project aims

1. To deliver a study that provides comprehensive **suite of actionable projects** which will provide a plan for the management of the River Camcor and the river corridor with an appropriate balance of use between civic amenity and wildlife

2. Providing guidance to Birr Municipal District and Birr Tidy Towns on the management of the river in the areas under their control

- Public access, walkways and accessibility
- Biodiversity management
- River management





River Camcor Study Area

JBA Consulting Engineers
and Scientists Ltd
24 Grove Island
Corbally
LIMERICK
Ireland

Project stages



Baseline studies



**Stakeholder
consultation**

**Landscape
and amenity**

- Access
- Views
- Amenities

Ecology

- Fish
- Habitats
- INNS
- Mammals

**Hydro-
morphology**

- Bank erosion
- River habitat improvement

**Surface water
drainage**

- SuDS opportunities



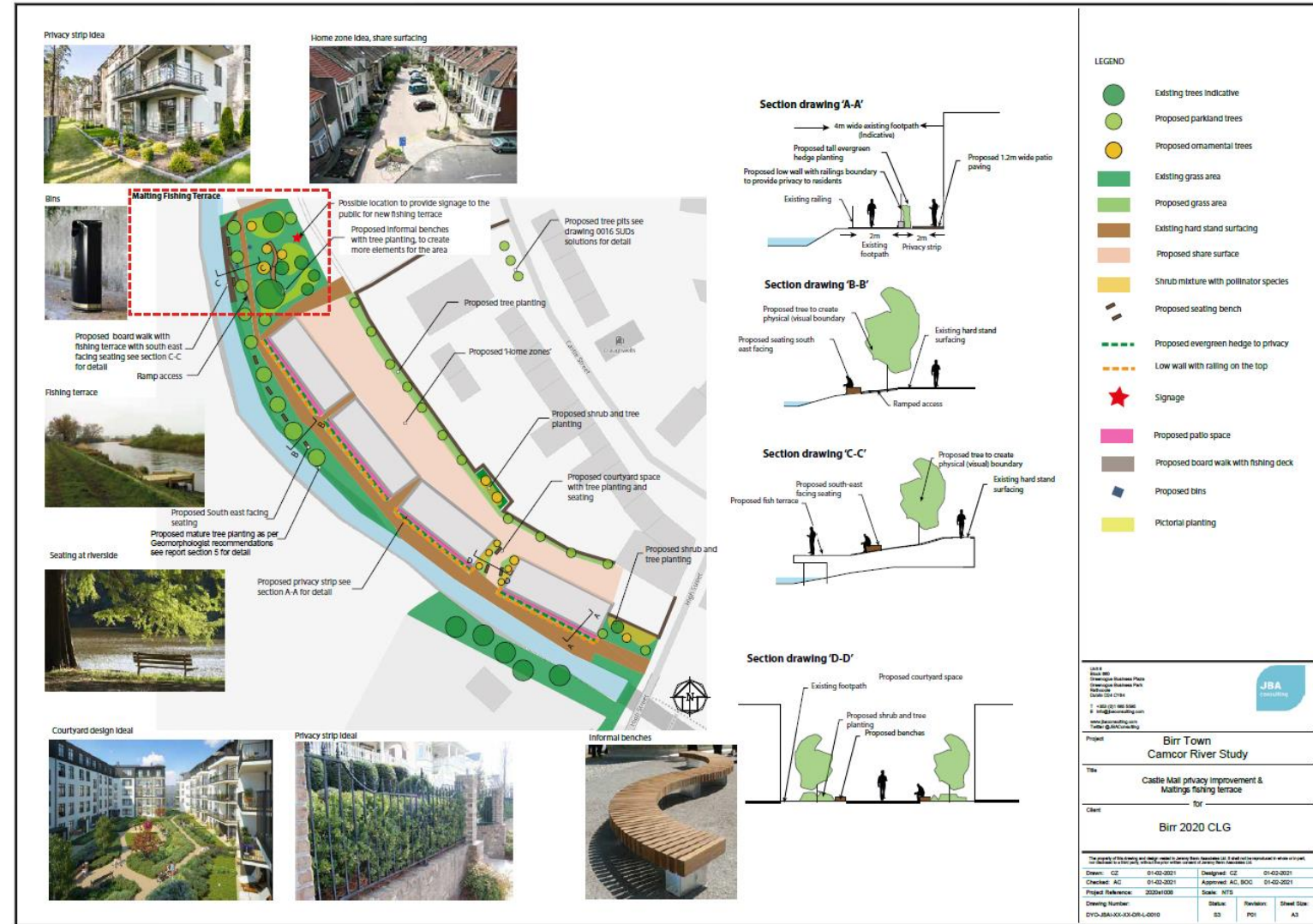
Actionable projects and recommendations



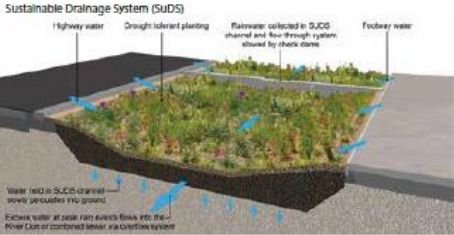
Landscape and amenity

- Landscape analysis and opportunities plans

1. Castle mall screening
2. Looped paths
3. Pocket park
4. Public Open Space Improvements
5. Fishing Terrace



SuDS



Resin bound gravel



Drought tolerant planting



Picnic tables



Informal benches



LEGEND

- Existing trees indicative
- Proposed ornamental street trees e.g. flowering cherries, Liquidamber styraciflua
- Proposed small multi-stem ornamental trees e.g. flowering cherries, Acer griseum, Japanese maples.
- Existing grass area
- Drought tolerant planting
- Low shrub pollinator species (refer to Birr castle planting scheme)
- Swale
- New Path in public open space Block paving
- Proposed Picnic tables
- Historic wall
- Existing footpath
- Proposed climber to soften the black bridge
- Check dams

JBA
100
Barrington Business Park
Barrington Business Park
Barrington
Co. Wick
T: +353 (0) 1 850 2040
E: info@jbacounting.com
www.jbacounting.com
Twitter: @jbacounting



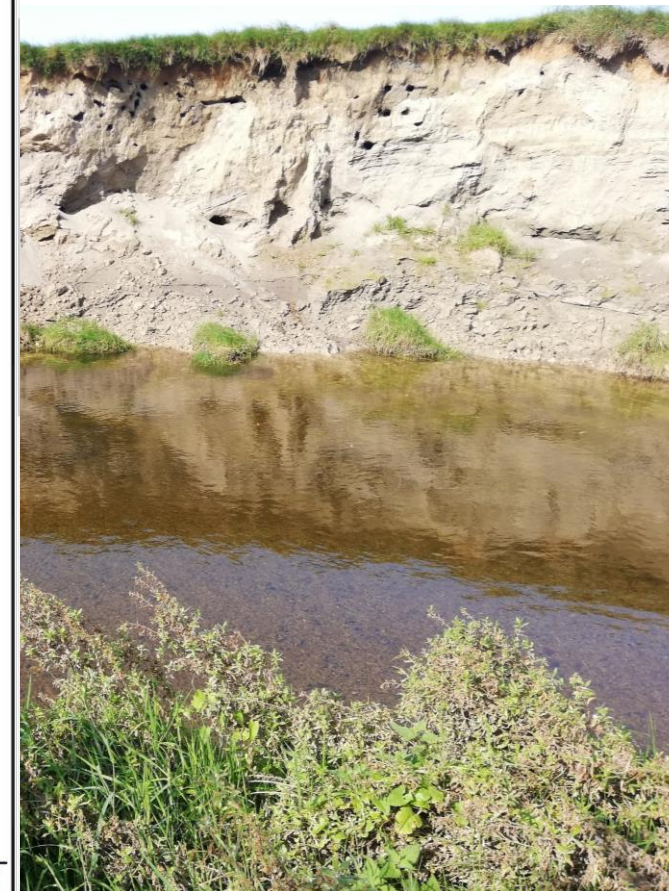
Project
**Birr Town
Camcor River Study**

Title
**Landscape Concept Plan
Rain Garden at Moorpark/High Street Junction
for**

Client
Birr 2020 CLG

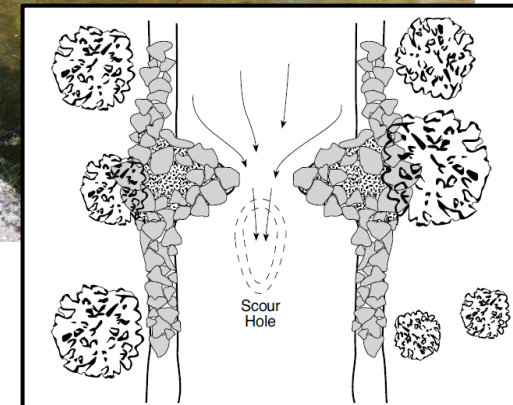
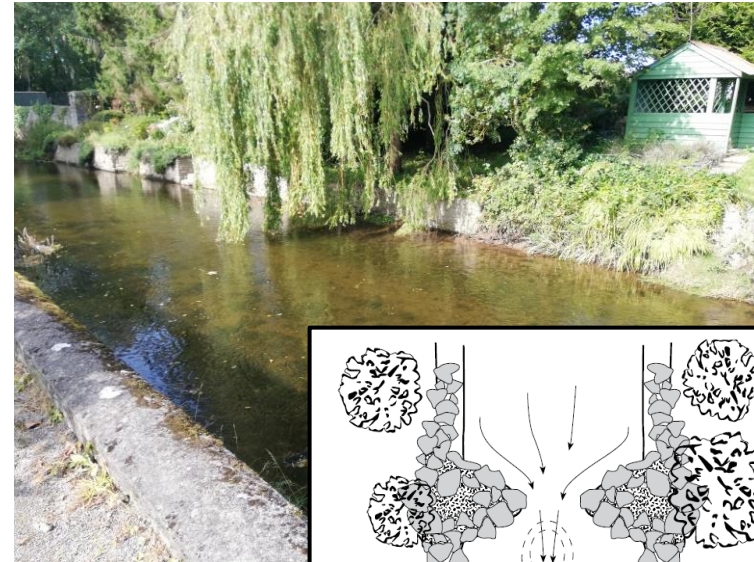
The copyright of this drawing and design remain the property of JBA Consulting Ltd. A third party is prohibited from reproducing or using it in any form without the prior written consent of JBA Consulting Ltd.			
Drawn: CZ	20-01-2021	Designed: CZ	20-01-2021
Checked: AC	21-01-2021	Approved: AC, BOG	21-01-2021
Project Reference:	2020/008	Scale:	NTS
Drawing Number:	D10-JBA-XX-001-0017	Status:	BS
		Revision:	P01
		Sheet Size:	A3

JBA
consulting



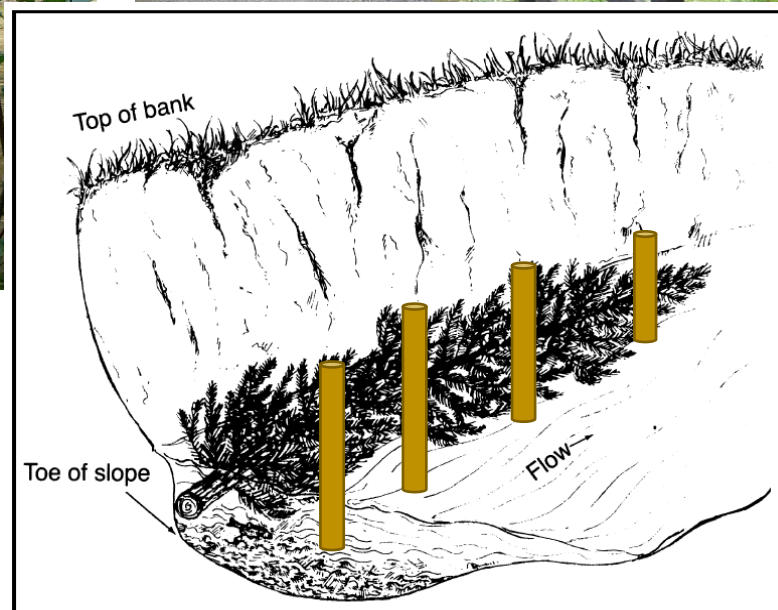
Hydromorphology and fisheries

- Fish and eel passage
- Predation
- Over-widened and uniform channel cross-section



Erosion control

- Soft engineering
- Hard engineering
- Do nothing



Project takeaways

- Example of pro-active community that are taking ownership of the river, and planning for biodiversity in their town and river corridor
- Focused opportunities to gather future funding
- Combining local perspectives, best practice and science to sustainably manage a river corridor
- Combining expertise in Landscape Architecture, Hydromorphology, Ecology, and Civil Engineering to form unique opportunities for amenity and management that put biodiversity at the core



Thank you!



emily.rick@jbaconsulting.ie