

BEHIND THE SCENES AT PINEWOOD STUDIOS: GREEN ROOF MITIGATION FOR GROUND NESTING BIRDS

ZOE WEBB (MCIEEM)

OVE ARUP & PARTNERS

ZOE.WEBB@ARUP.COM

RUSSELL HARTWELL

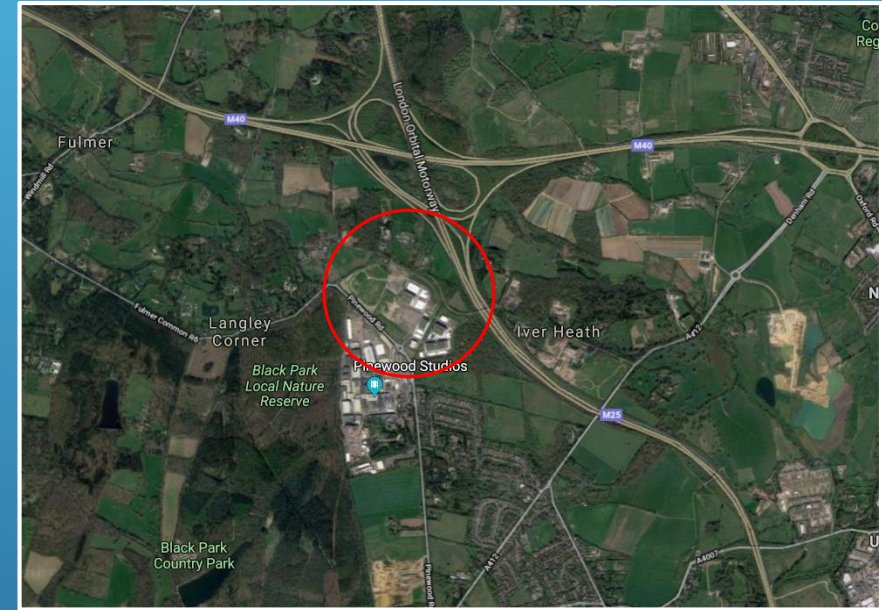
SKY GARDENS

RUSSELL.HARTWELL@SKY-GARDENS.CO.UK

AGENDA

- The PSDF project
 - Planning permission
 - Developing the design
 - Monitoring and maintenance
 - The bigger picture
- 
- Several thin, parallel white lines of varying lengths and orientations are positioned in the bottom right corner of the slide, creating a modern, abstract graphic element.

Pre-development



- Black Park
- TPO
- Ancient woodland
- Reptile
- Badger
- Bats
- Birds

Environmental Statement

*“Not less than 2.4 hectares of green roofs will be provided within the scheme. The buildings with largest unbroken roofs or those roofs closely grouped together will be utilised and planted with tussock-type species rich grassland. These will be designed to support skylark *Alauda arvensis* (but would also provide valuable habitats for a wide range of species).”*

“Fields F9 and F10, to the south and south east of The Clump, would be enhanced specifically for skylarks with the provision of species rich tussocky grassland with heathland characteristics and scrub.”

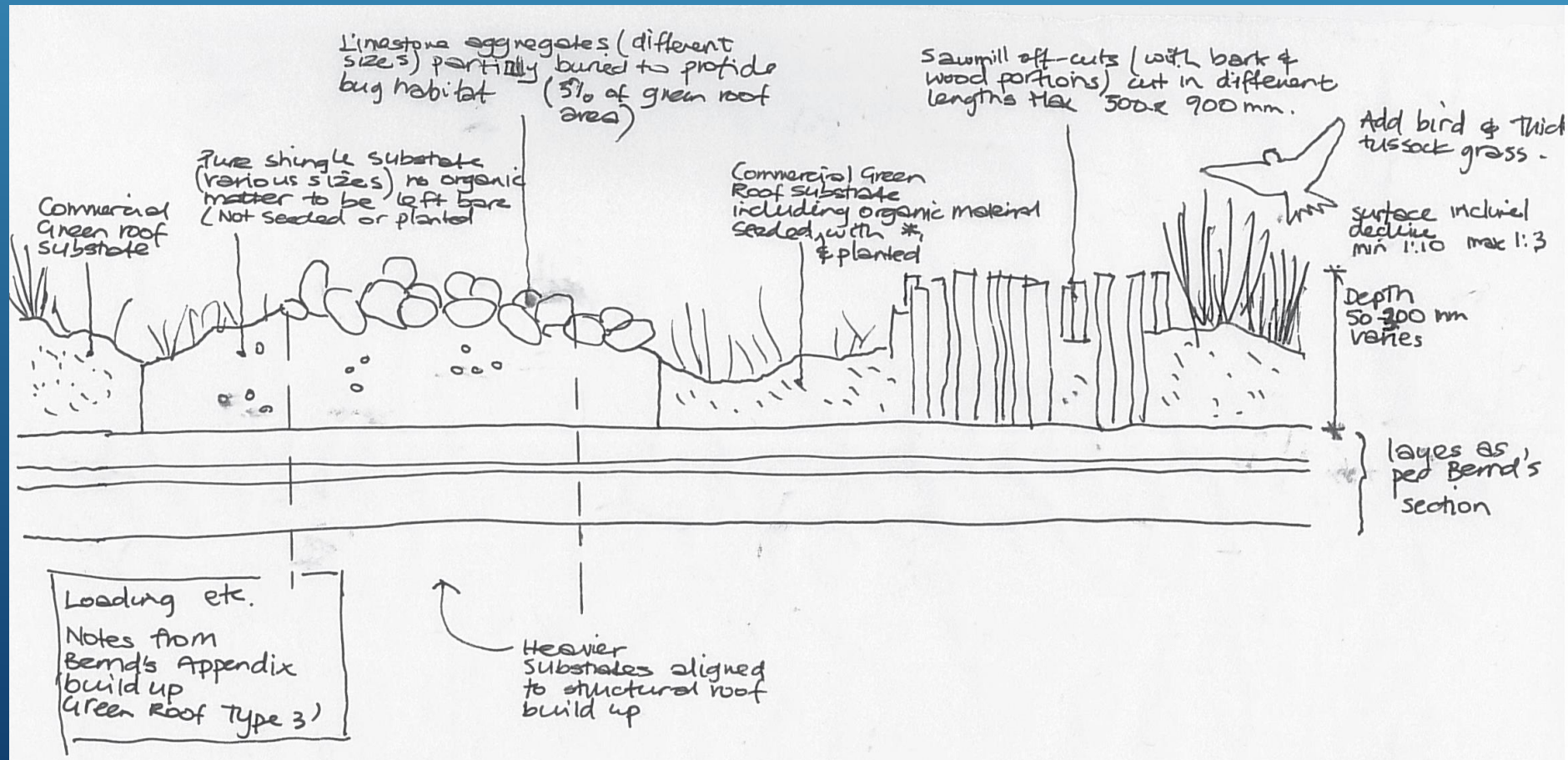


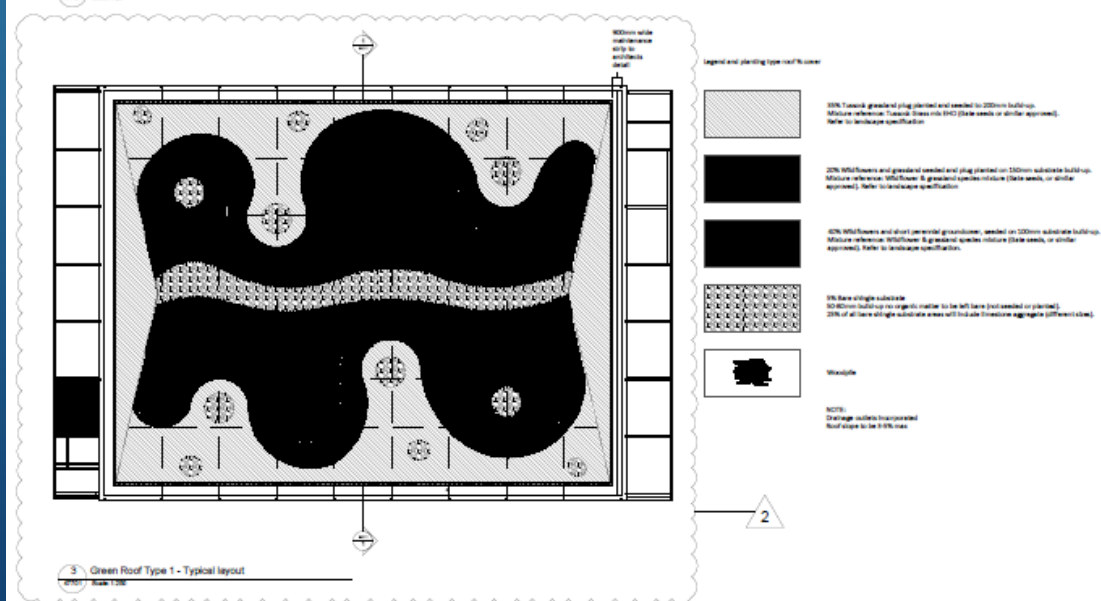
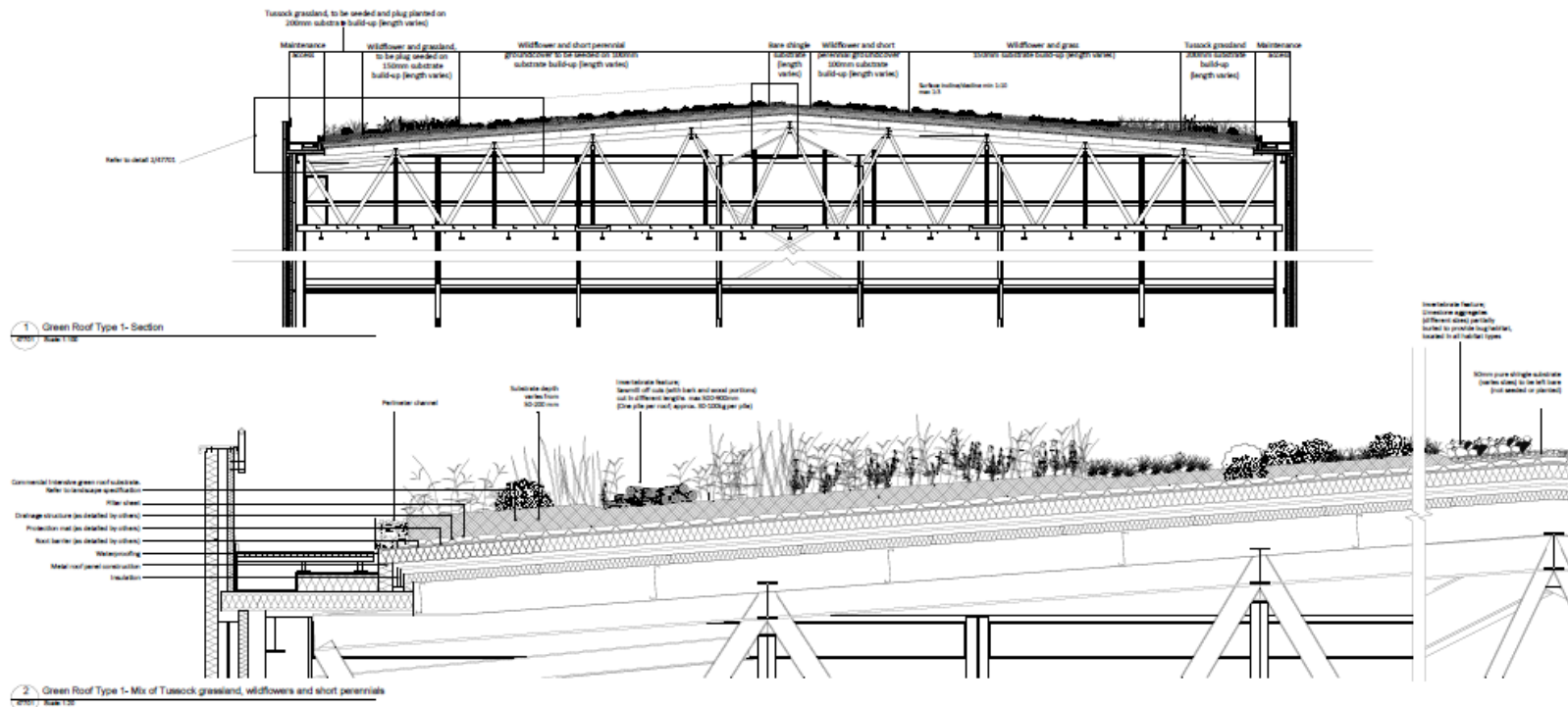
Condition 11 – The first reserved matters application submitted shall include an ecological management plan in respect of the site covering a period of not less than 25 years

Condition 12 - The first reserved matters application submitted shall include an ecological monitoring plan in respect of the site

Ecological Management and Monitoring Plan

- Established the design principles
- Established broad species composition
- Established the requirements of management, maintenance and monitoring








Monitoring

- Targeted 25 year monitoring plan
- Monitor the establishment and development of the green roofs (botanical communities and target species)
- First year results (2017)

Maintenance

- Annual maintenance undertaken by Sky Garden
 - First year results (2017)
- 
- A series of white diagonal lines of varying lengths and thicknesses, located in the bottom right corner of the slide, creating a modern, abstract graphic element.

Post-Phase 1 development



ANY QUESTIONS?

ZOE WEBB (MCIEEM)

OVE ARUP & PARTNERS

ZOE.WEBB@ARUP.COM

RUSSELL HARTWELL

SKY GARDENS

RUSSELL.HARTWELL@SKY-GARDEN.CO.UK

