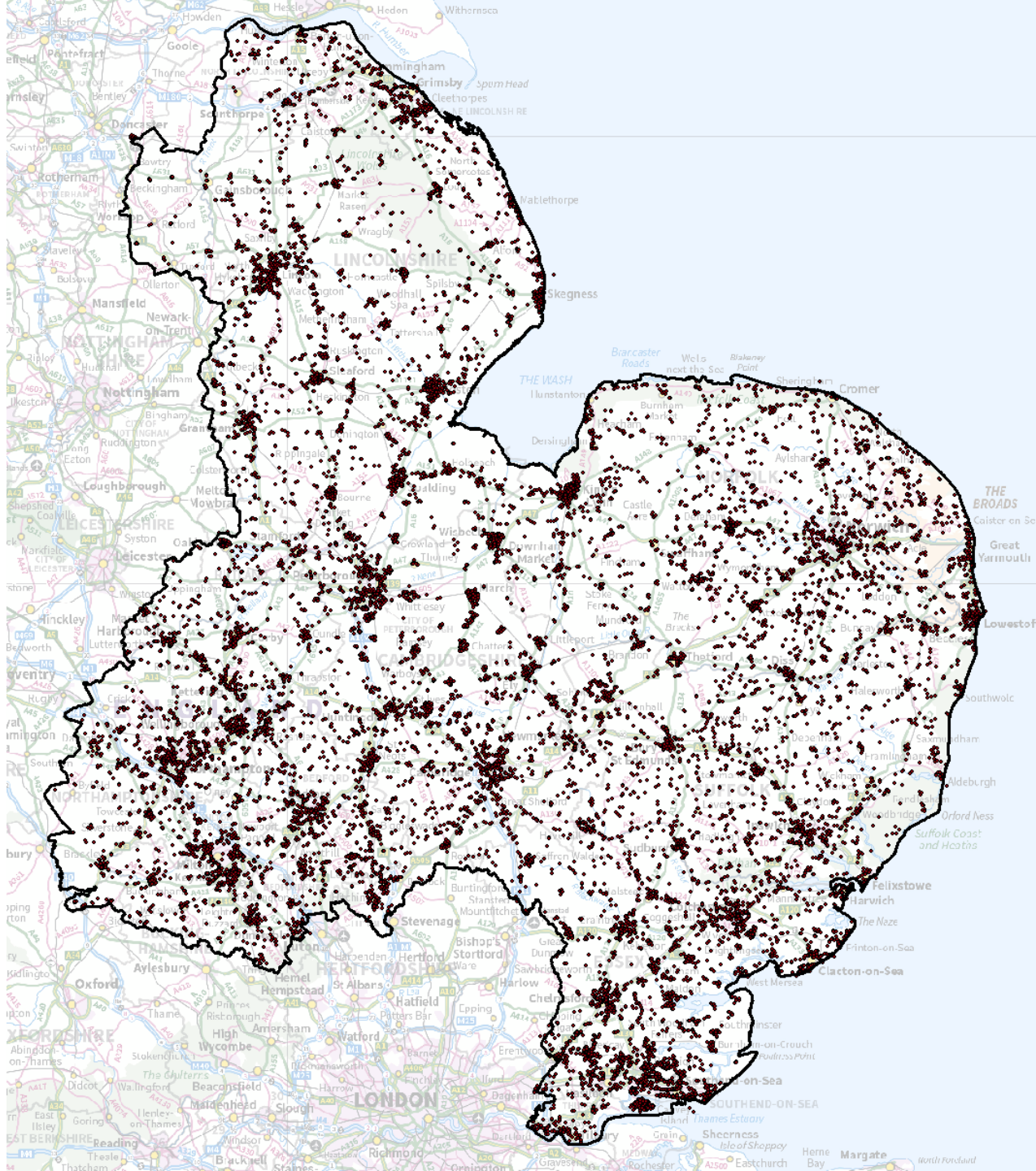


A bigger, better, joined approach to prioritising Anglian Water's assets

Chris Gerrard CEnv MCIEEM, Natural Catchment and Biodiversity Manager

Kylie Jones MCIEEM, Operational Biodiversity Manager, Anglian Water





- 49 SSSIs
- 70+ LWS
- C. 800 sites with priority habitat
- 500ha woodland
- 130ha lowland fen
- 130ha semi-natural grassland



A living landscape

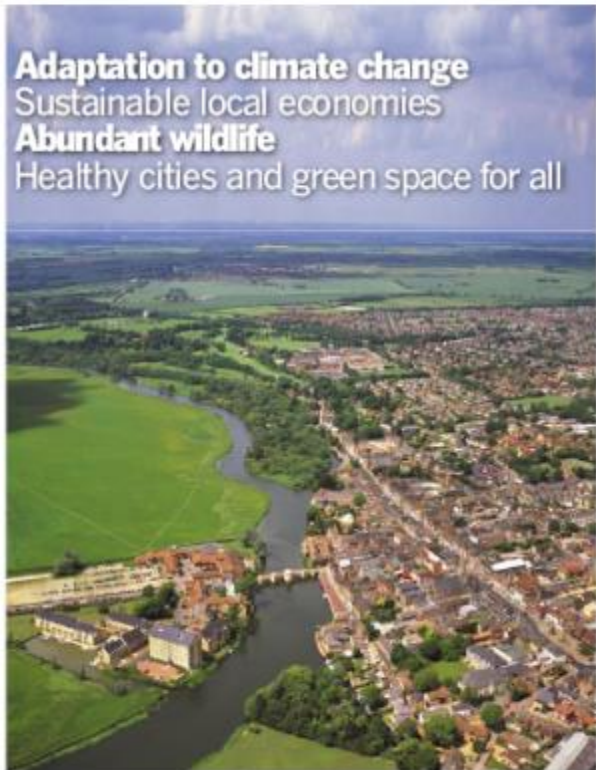
A call to restore the UK's battered ecosystems, for wildlife and people

Adaptation to climate change

Sustainable local economies

Abundant wildlife

Healthy cities and green space for all

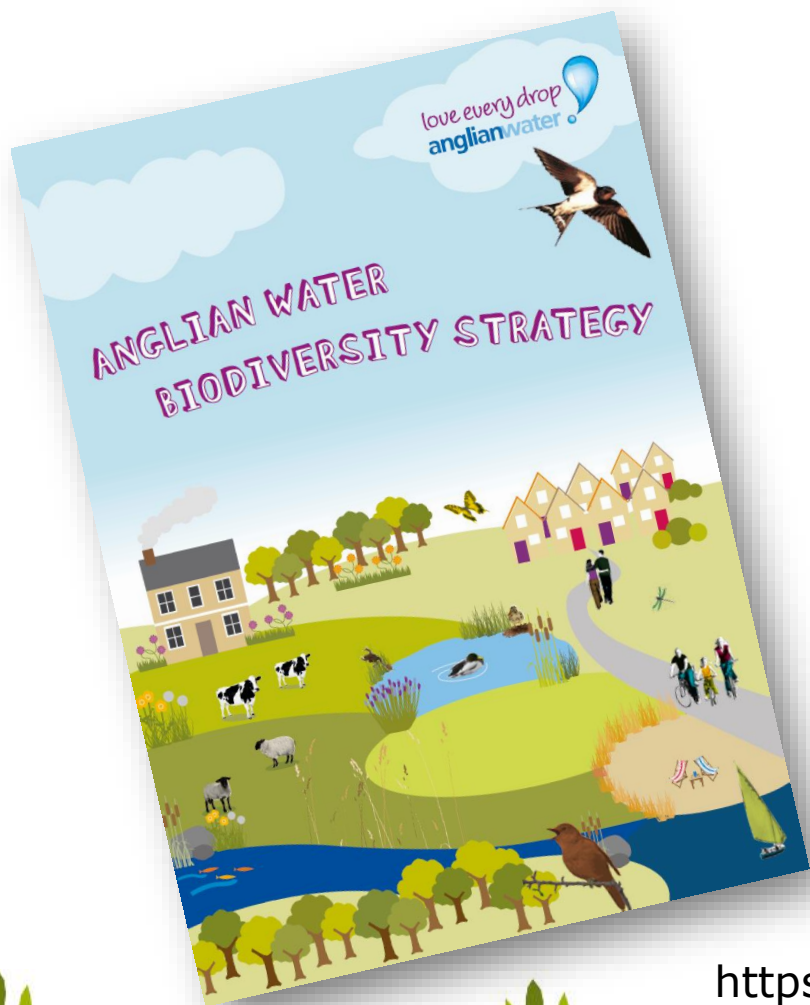


love
every
drop.



anglianwater




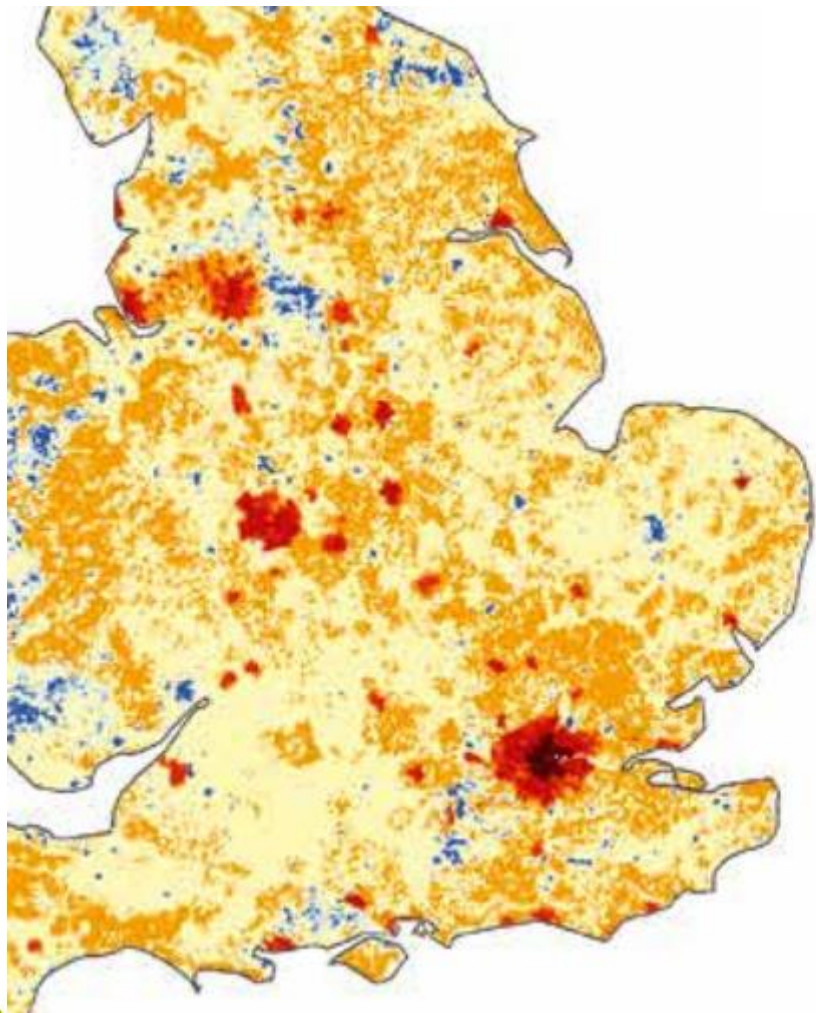


Identify location and extent of priority habitats on operational sites, screen against criteria such as size, proximity to protected sites, landscape scale conservation projects, species priority areas by March 2020. Develop management prescriptions for key sites in AMP7

<https://www.anglianwater.co.uk/environment/our-commitment/our-projects/>



- 
1. Enhancing management across the whole estate
 2. Focussing our resources on additional management for the best sites
 3. Tracking our construction activities for no net loss/net gain



| | | Site intactness score | | | |
|------------------|-----------------|-----------------------|--|--|-------------|
| | | Highly intact | | | Less intact |
| Site designation | Global/national | | | | |
| | Local | | | | |
| | PHI | | | | |
| | None | | | | |



Applying the 'Lawton principles'

Better

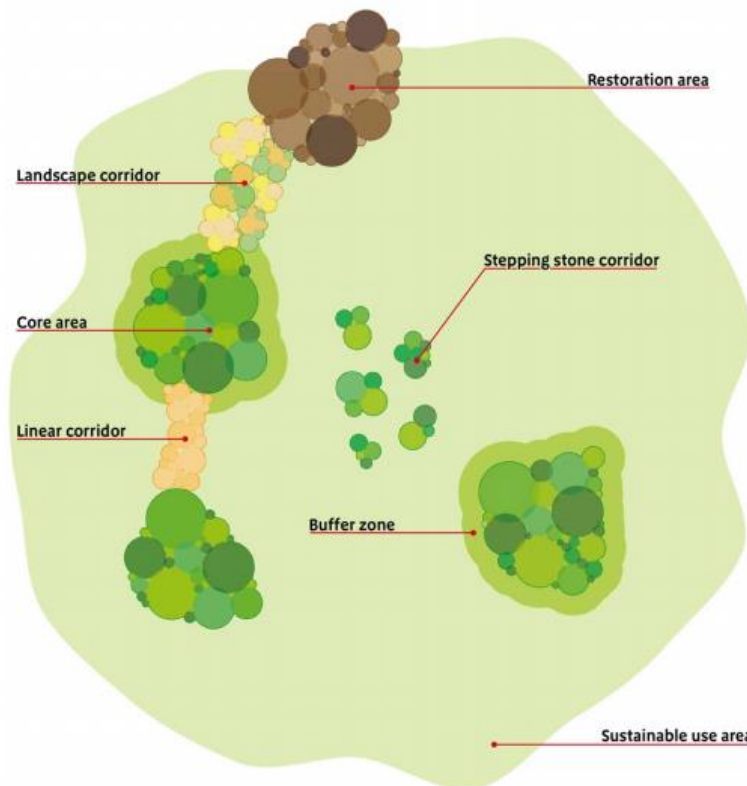
- Functionally significant habitat on site
- Biotope-specific species representation
- Species Quality Index

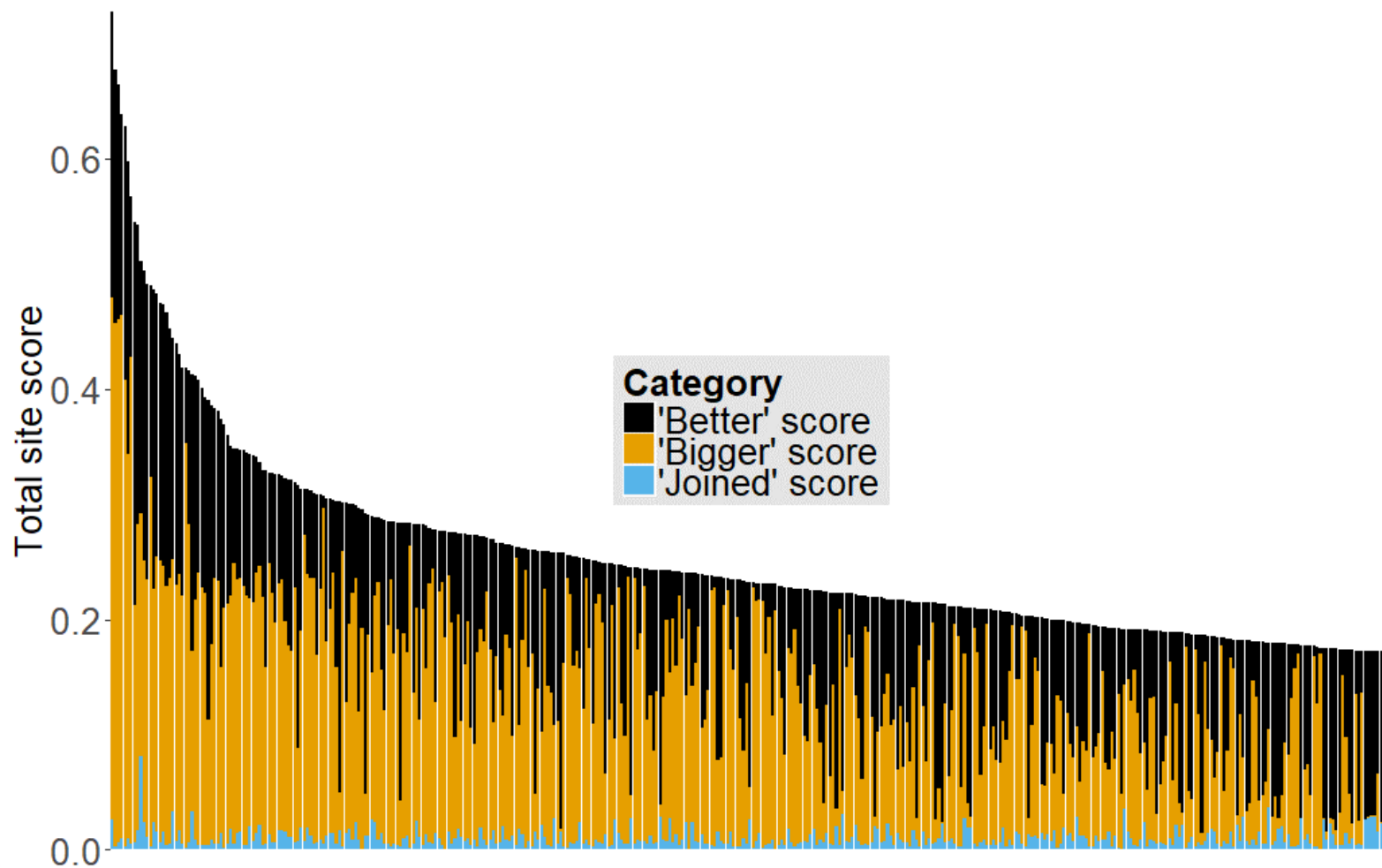
Bigger

- Saturating curve
- Intermediate curve
- Exponential curve

Joined

- Protected area network
- Connected priority habitats
- Landscape Scale Conservation Initiative





Results



- Highest scoring site is Alton Water in Suffolk – a Local Wildlife Site
- Most of our most important SSSIs appear in the top 30
- The smallest site in the top 30 is Horning WRC near Norwich – 2.8ha



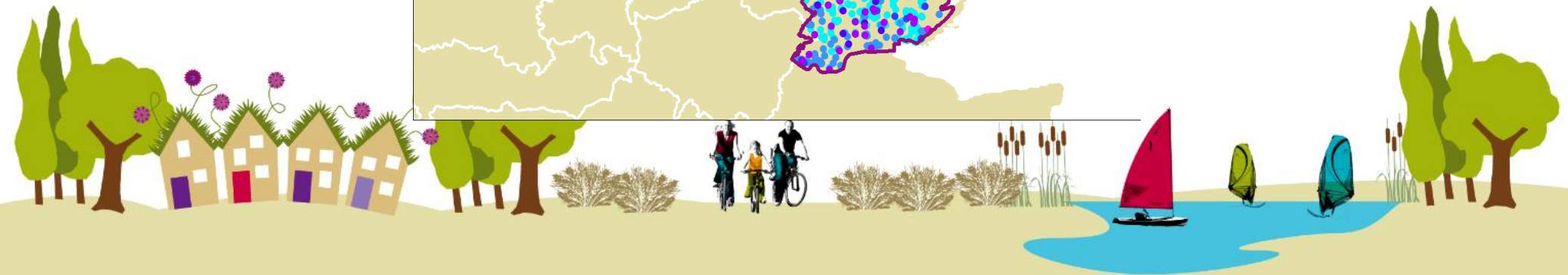
Anglian Water Region

Total Score

- 0 - 0.04
- 0.04 - 0.08
- 0.08 - 0.15
- 0.15 - 0.20
- 0.20 - 0.50
- >0.50

love
every
drop.

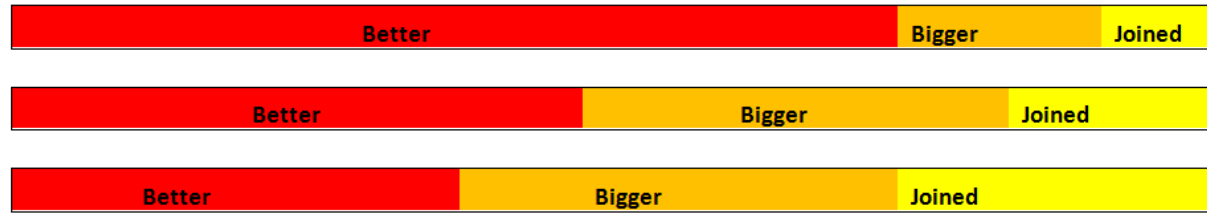
anglianwater



Weightings

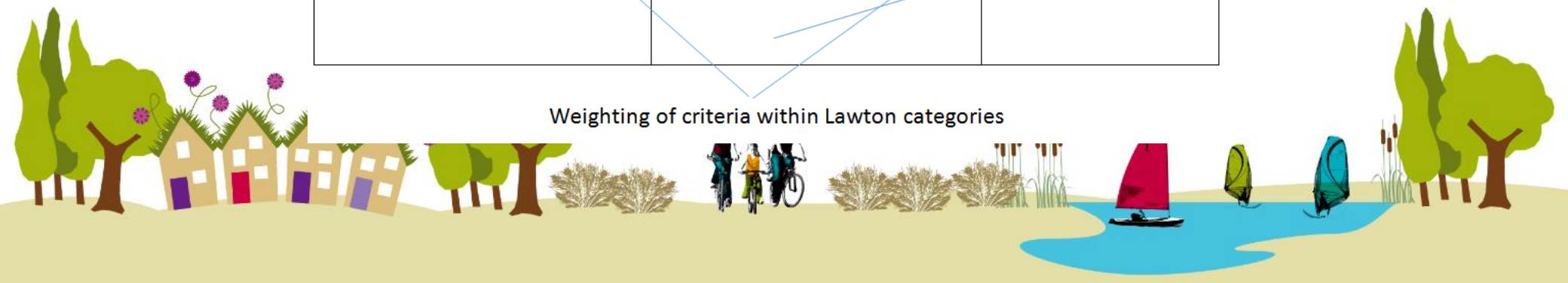


'Lawton review category weighting'



| Better | | Bigger | | Joined |
|-----------------|----------------------|-----------------|--------------|-----------------|
| <u>Variable</u> | <u>Unit</u> | <u>Variable</u> | <u>Scale</u> | |
| % rep | -by 'coarse habitat' | Saturating | | LSCI |
| SQL | | Intermediate | | PA network |
| PHI | -'functional patch' | Exponential | | % PHI in buffer |

Weighting of criteria within Lawton categories



Phase 2



- Develop the analysis with more species records covering more taxa and a deeper understanding of process and habitat requirements
- Resolve issues such as data conflicts and recording effort which introduce bias
- Improving the spatial analysis of habitat patches
- Refining the weightings...



Awaiting QR code and web link

Thank you

biodiversity@anglianwater.co.uk

@chrisgerrard

