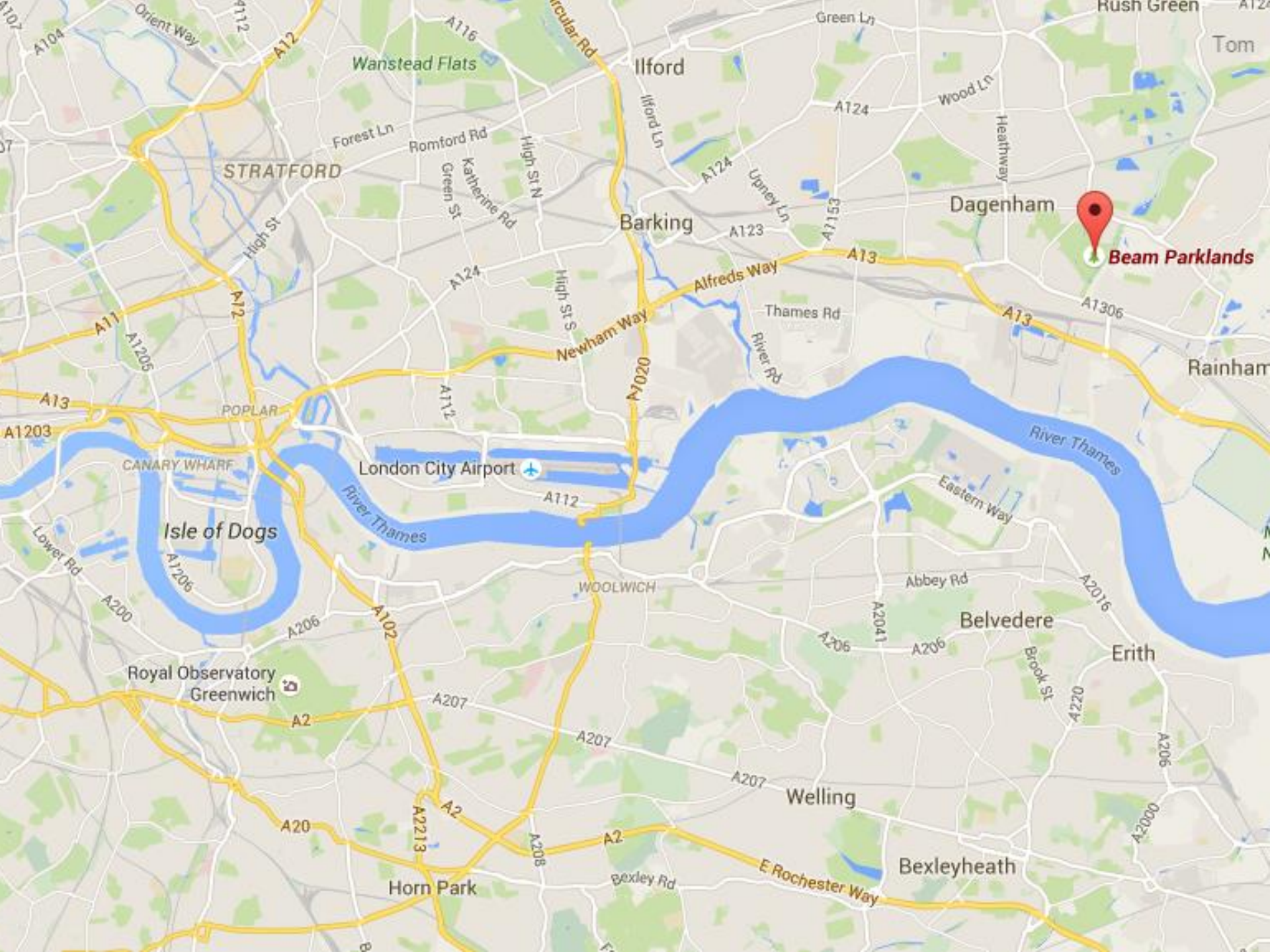


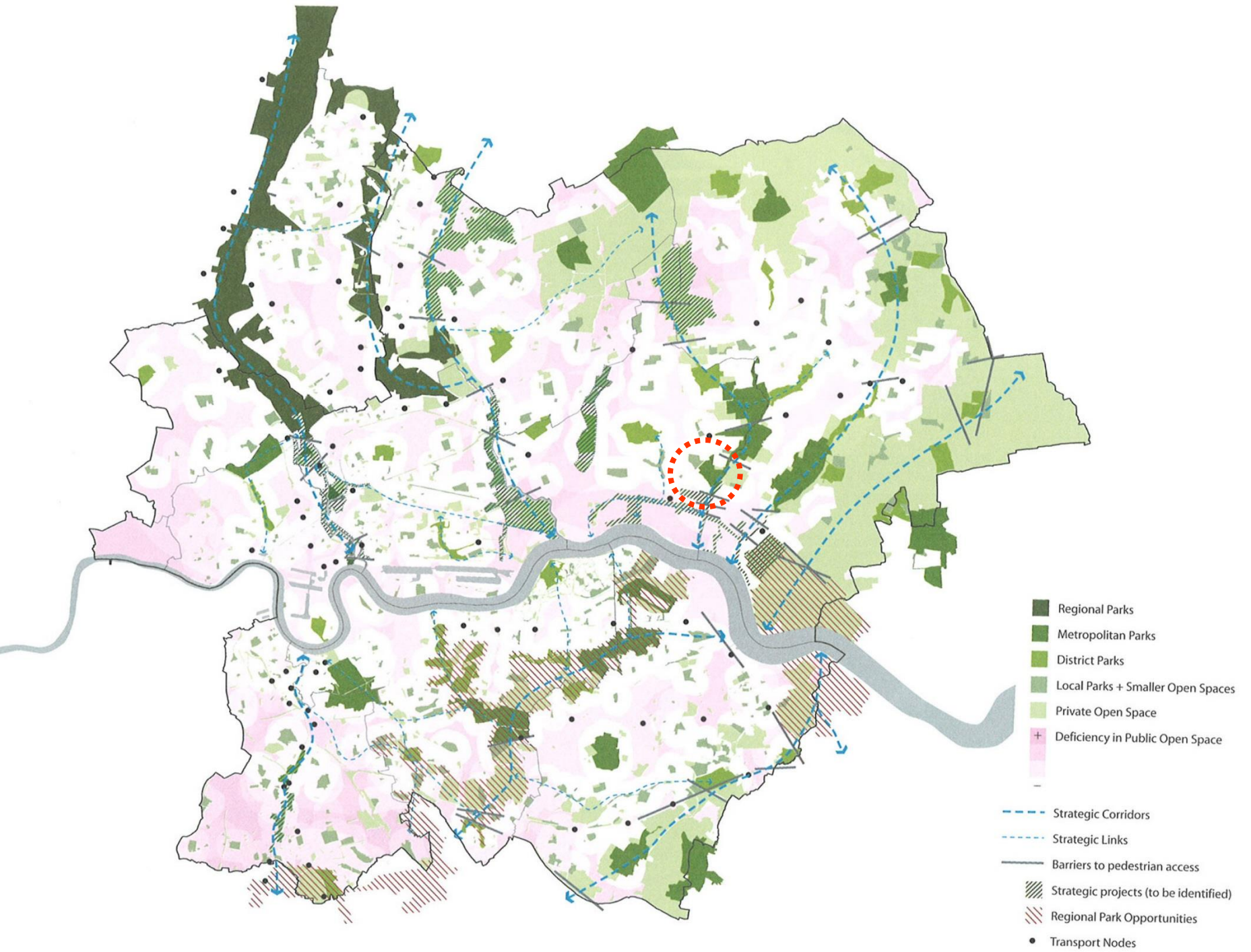
Beam Parklands: A critical appraisal of mitigation success, and failure.

Mark Job, Landscape Architect
Tom Gray, Ecological Consultant

@ArupEnviro









Beam Parklands

What you told us...

We met you on:

- Saturday 9th May 2009 at the Beam Parklands; and
- Saturday 6th June 2009 at the Worby Community Centre.

You told us:

- What you thought of our plans for the Beam Parklands;
- Your ideas for the parklands; and
- Your ideas for a name for the parklands.

Your most popular suggestions included:

- Increased wildlife including birds, trees and ponds;
- Increased play opportunities;
- Improved access to the park;
- Improved footpaths;
- You also liked the ideas presented for new boardwalks for people to walk on.

What we did...

We listened to what you had to say and we have taken your ideas into account.

Beam P

Vision for the parklands working with you

Beam Parklands

What happens next?

We will be working with you to develop the parklands and we will be keeping you up to date with our progress.

Help make 100% parkland.

Help make 100% parkland.

Welcome to
Parklands

Pond for people
and wildlife.



Woodland
area.



Viewing mound beside
the playing fields.



Natural Playground
with natural mounds
and fallen logs.



New entrance to the
park with signage.

Pond specially
designed for newts.



Open woodland area next to
the Wants stream.

Most of the site kept open
and unaffected during the
works.

Resurfaced
path.



Playing fields kept
open for public use.



Viewing mound at the
old hospital site.











2003

12/2003



Beaumont Ave

Oval Rd N

Lower Maryke Ave

Lower Rd

South St

Charity Way

2010

6/2010



Image © 2017 Bluesky

Google Earth

2013

7/2013



Image © 2017 The GeoInformation Group

Google Earth

2015

6/2015



Google Earth

2017



Ponds

































Wildflower grassland



















Woodlands

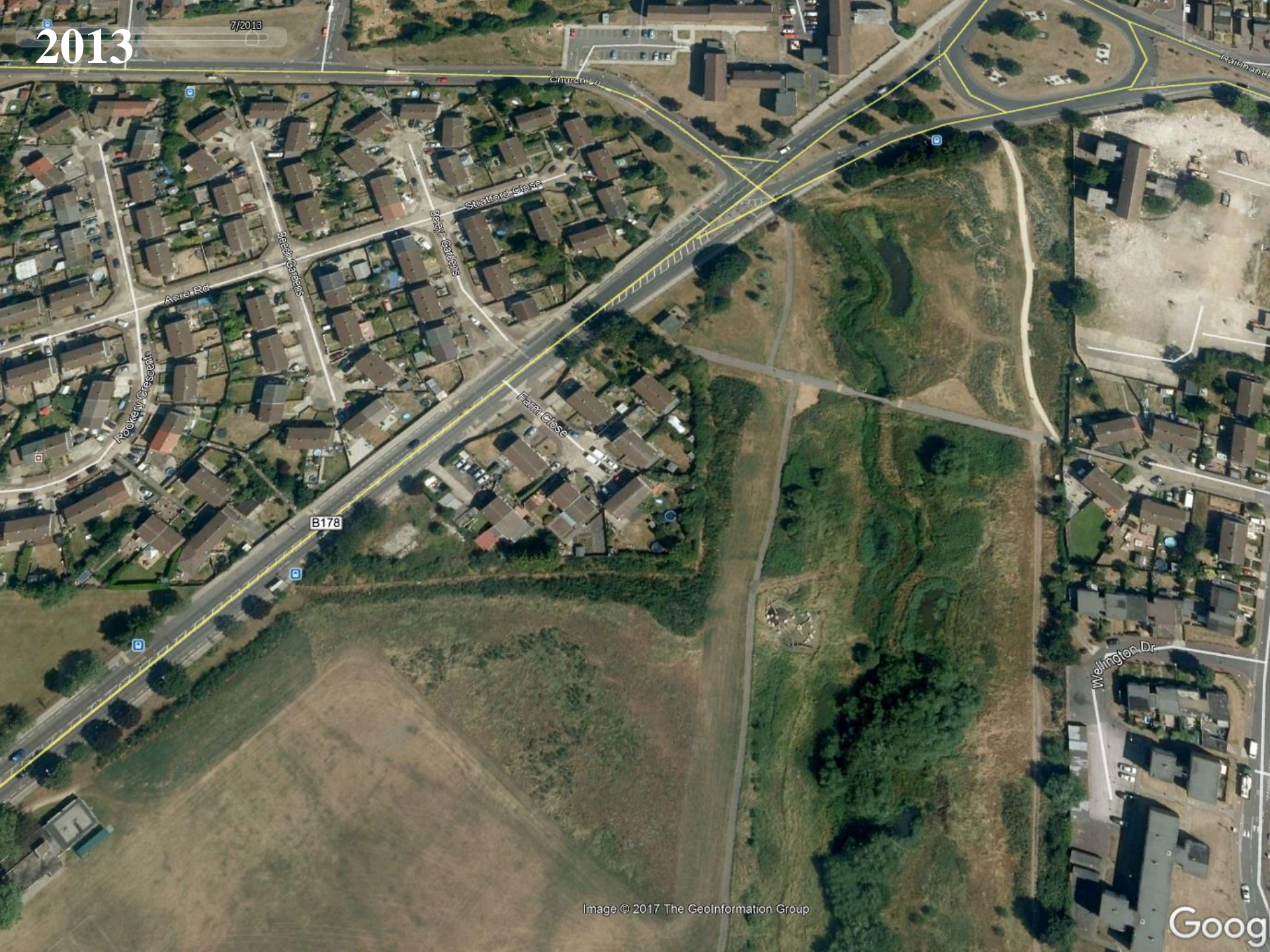
2003

12/2003

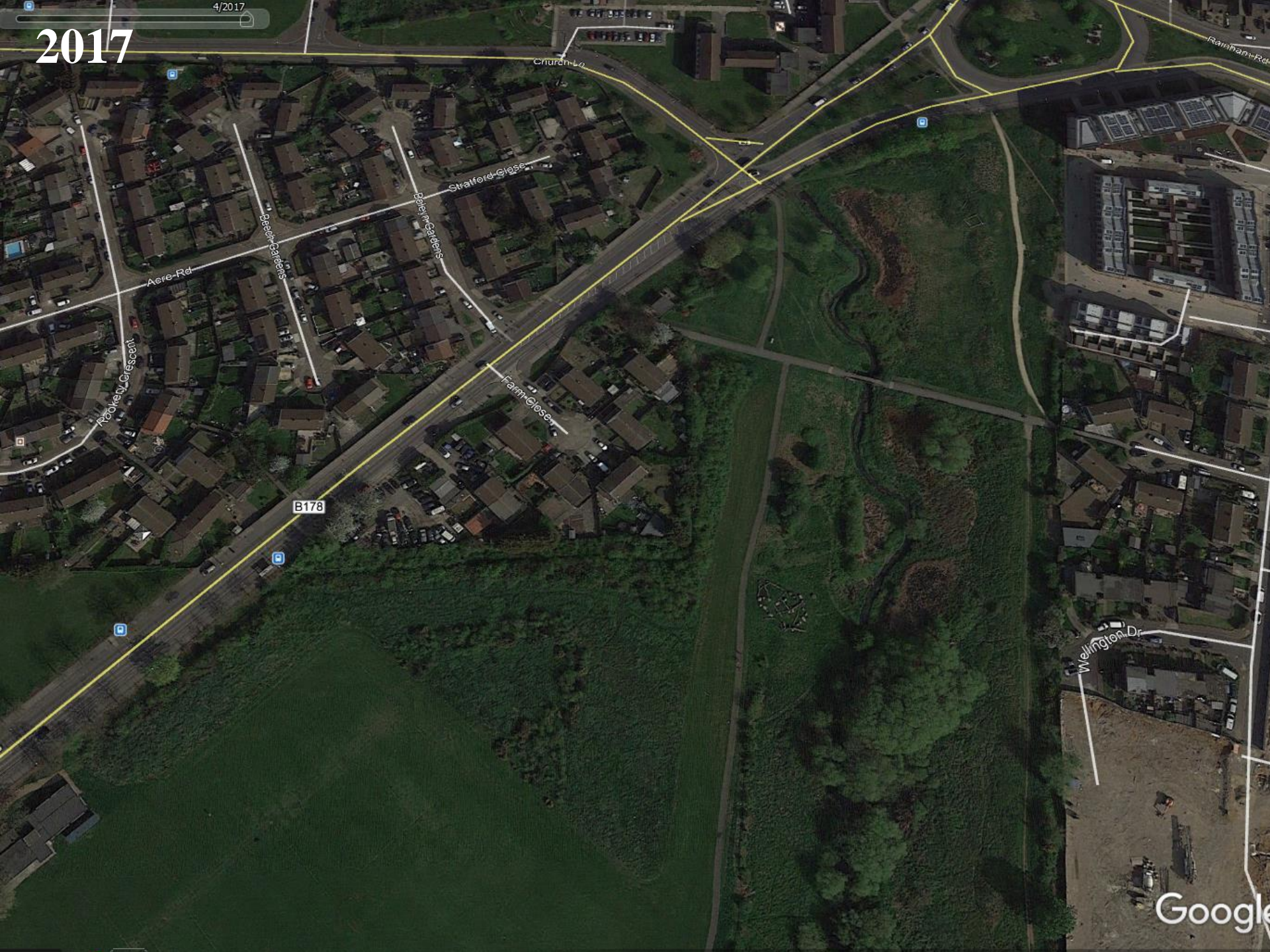


2013

7/2013



2017











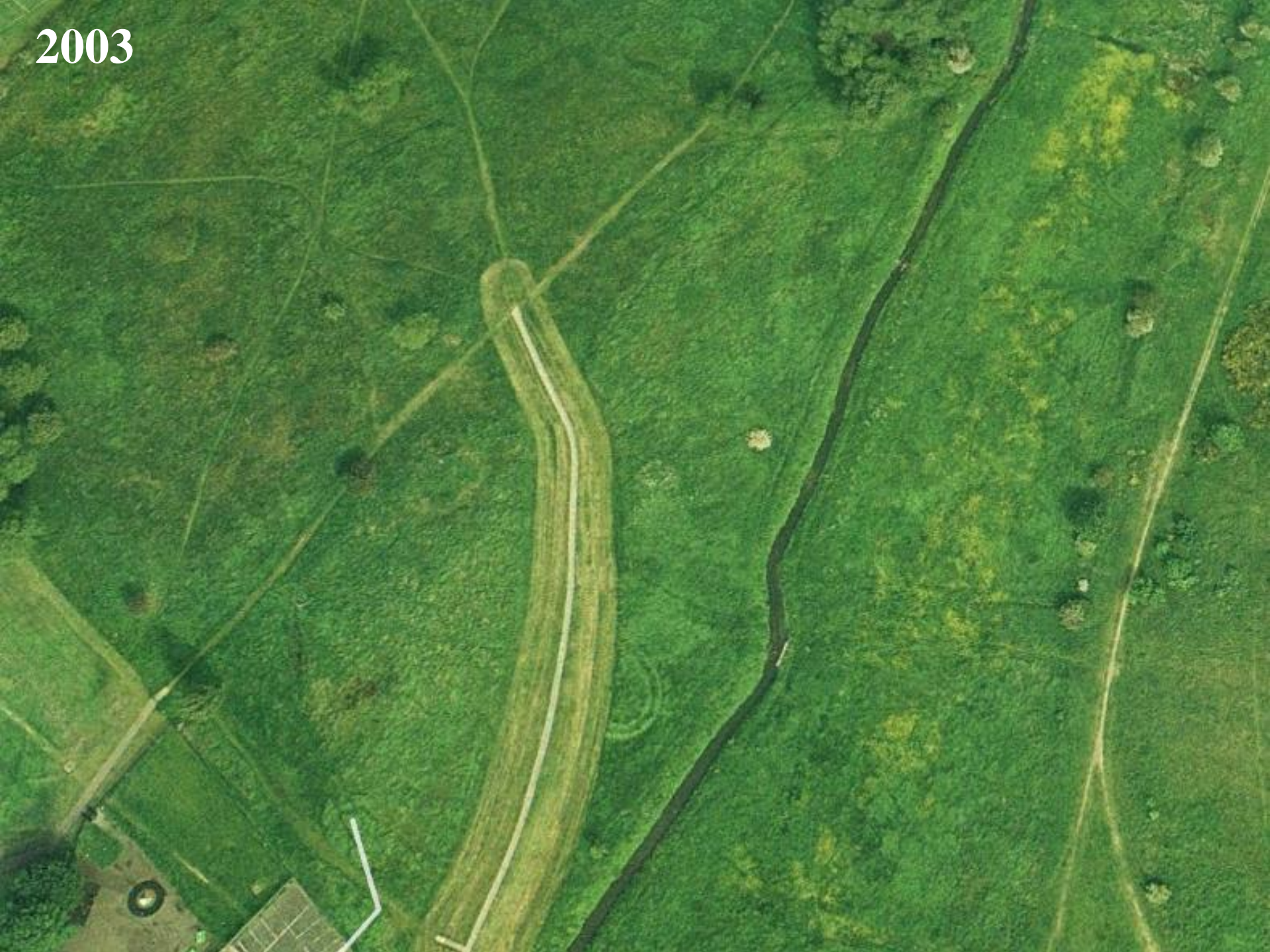






Rivers

2003



2013



2017















Beam Parklands Natural Capital Account (2014)

**Significant
biodiversity benefits**



£51k per year
Natural capital
maintenance



£770k per year
Community benefits



FLOOD WARNING

£591k per year
Flood risk
reduction benefits

(Eftec, 2015)



Habitats

Filter tabs: **All** | **Orchards** | **Ponds** | **Hedgerow** | **Wet Woodland** | **Reedbed**

Sort by: **date**



WWT Welney



West Wittering



N25 Waterford Bypass



Cambridgeshire Guided Busway



Beam Parklands



Southam Quarry



Take home messages

We are always going to be working with imperfect information and limited budgets

Mitigation has and will continue to not develop as expected

We need to acknowledge this as an industry, and tell each other about it

As designers, we must be responsive to conditions on the ground

We are drawing out these lessons learned and using them positively

